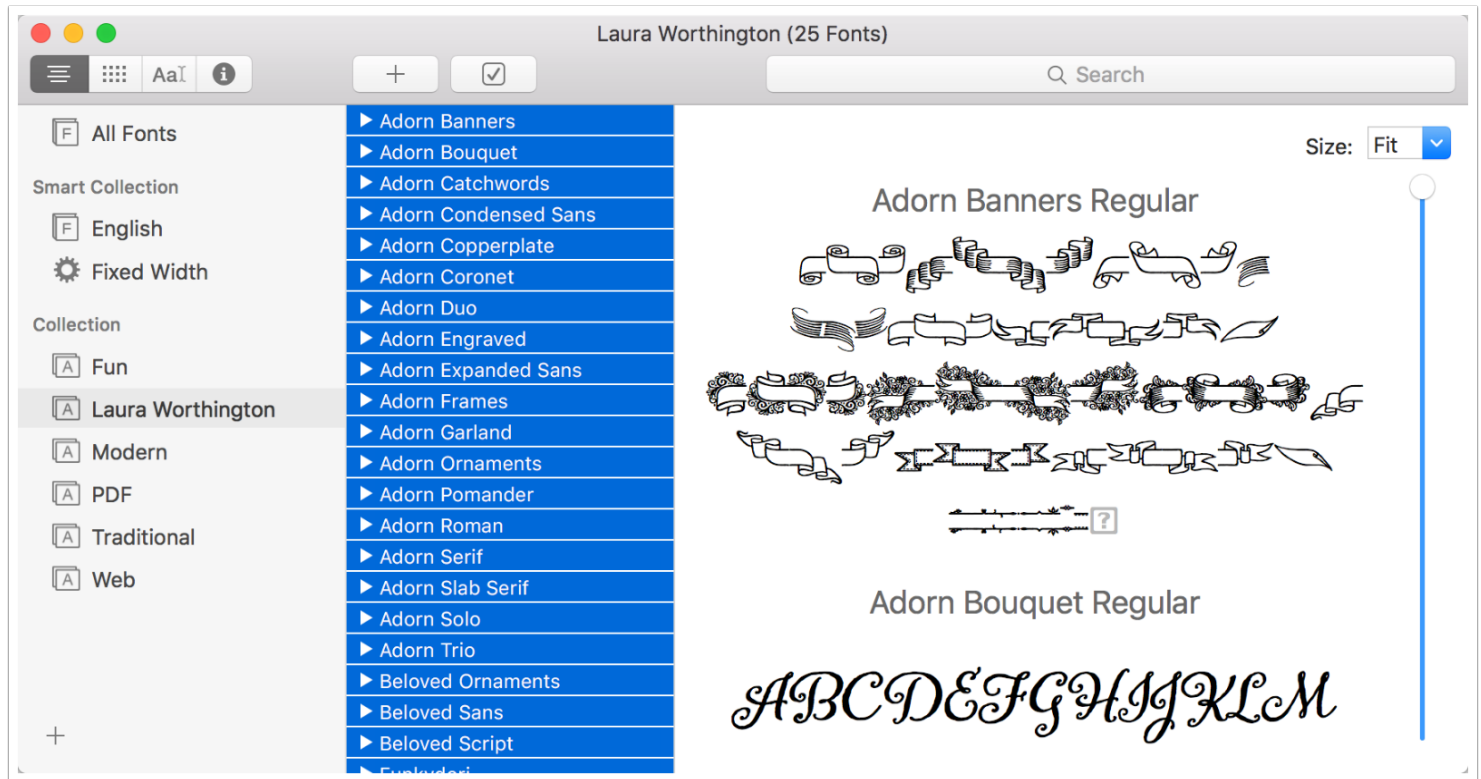


# How to print or save font samples from Font Book

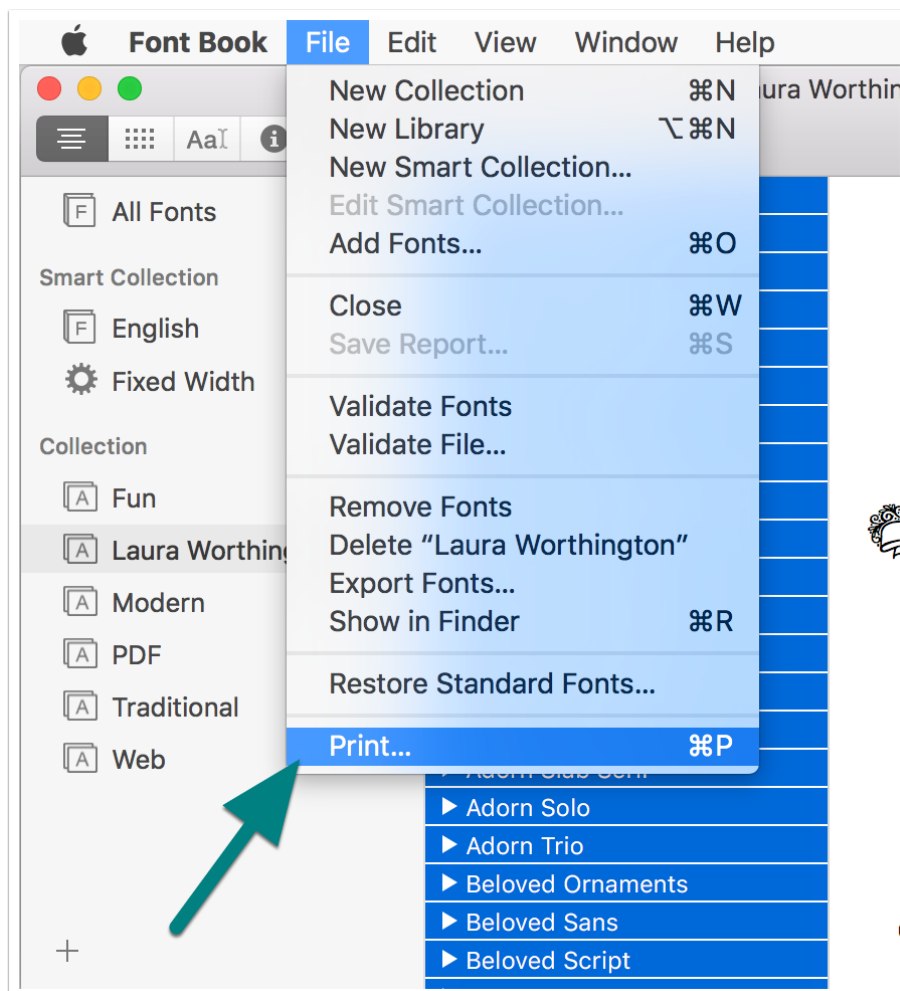
If you like to keep a printed notebook of your fonts to flip through, or want to send a PDF to a client, Mac's built-in Font Book application has 3 different report formats for you to choose from. Here's how to find and use them.

Open Font Book and select the fonts you want to print or save samples of. Shift-click to make a contiguous selection, or command-click to make a non-contiguous selection.



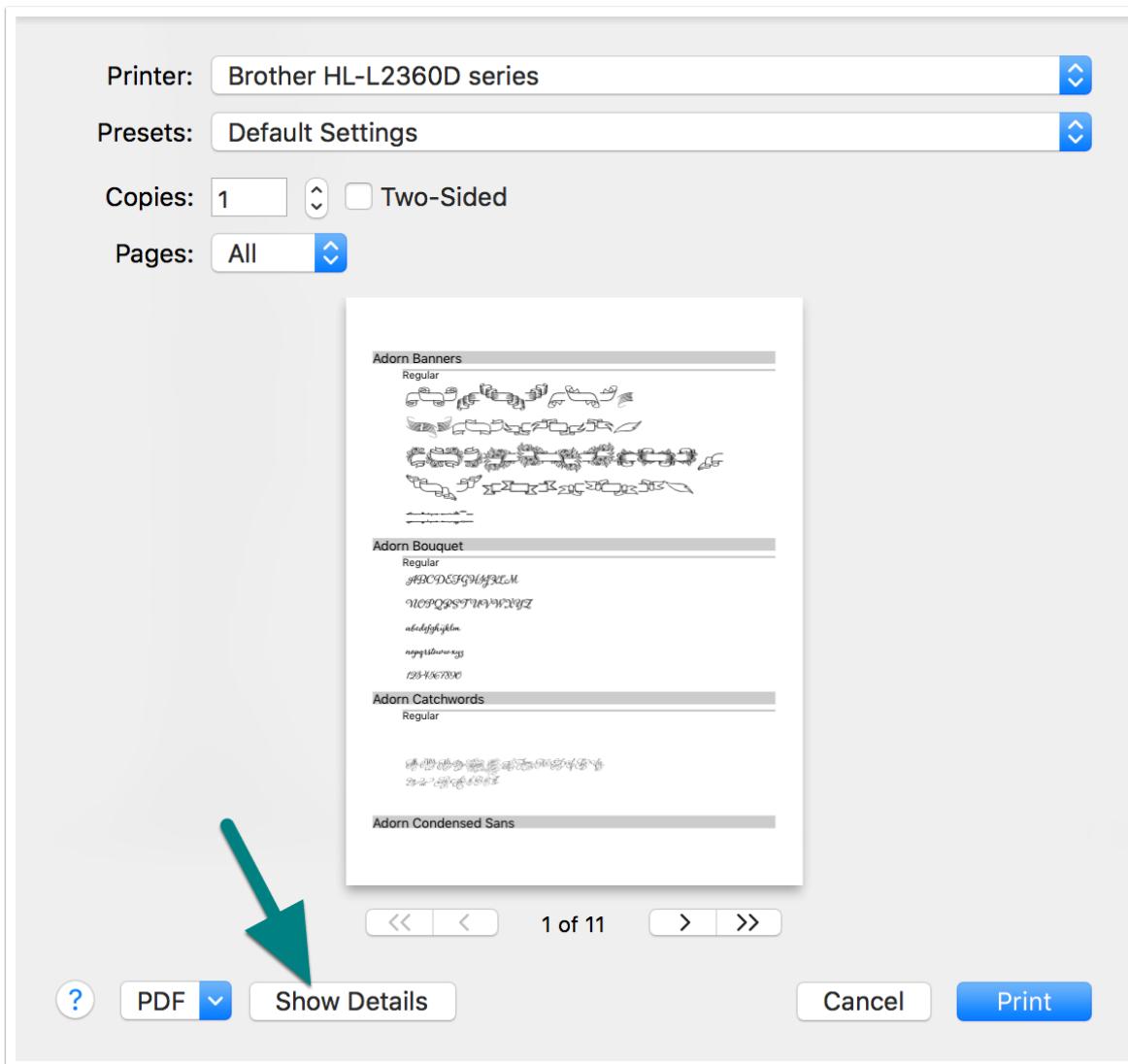
# How to print or save font samples from Font Book

Go to the File menu and select Print.



# How to print or save font samples from Font Book

Click the Show Details button or the down arrow to activate the full print options dialog window.



# How to print or save font samples from Font Book

Select Font Book from the center pulldown and Catalog from the Report Type pulldown. You can adjust the glyph size to fit more or less on a page. The standard character set of each font you selected will be included. Use the arrow buttons to preview different pages of the report.

The screenshot displays the Font Book application window. On the left, a preview pane shows four font samples: 'Adorn Banners', 'Adorn Bouquet', 'Adorn Catchwords', and 'Adorn Condensed Sans'. Below the preview, navigation arrows and '1 of 11' are visible, with a teal arrow pointing to the right arrow. On the right, the print settings are configured: Printer is 'Brother HL-L2360D series', Presets is 'Default Settings', Copies is '1', Pages is 'All', Paper Size is 'US Letter' (8.50 by 11.00 inches), and Orientation is 'Portrait'. The center pulldown menu is set to 'Font Book' and the Report Type pulldown is set to 'Catalog'. Below these, the 'Glyph Size' slider is set to '18 pt', with a teal arrow pointing to the slider. At the bottom, there are buttons for '?', 'PDF', 'Hide Details', 'Cancel', and 'Print'.

Printer: Brother HL-L2360D series

Presets: Default Settings

Copies: 1 ☐ Two-Sided

Pages: ☒ All ☐ From: 1 to: 1

Paper Size: US Letter 8.50 by 11.00 inches

Orientation: ☒ Portrait ☐ Landscape

Font Book

Report Type: Catalog

Glyph Size 18 pt

? PDF Hide Details Cancel Print

# How to print or save font samples from Font Book

Select Repertoire from the Report Type menu to print all the glyphs in each font. Glyph Size can be adjusted to fit more or less on a page. You might want to use Repertoire for one font at a time. Note that the page count can rise rapidly on advanced fonts.

Printer: Brother HL-L2360D series

Presets: Default Settings

Copies: 1 ☐ Two-Sided

Pages: ☒ All  
☐ From: 1 to: 1

Paper Size: US Letter 8.50 by 11.00 inches

Orientation:

Font Book

Report Type: Repertoire

Glyph Size 14 pt

1 of 786

? PDF Hide Details Cancel Print

# How to print or save font samples from Font Book

Select Waterfall from the Report Type pulldown to see a one page sample of each font rendered in different point sizes you choose, along with other data if you check the Show Font Details button.

The screenshot shows the Font Book application window. On the left, a preview of a 'Waterfall' report for the 'Adorn Copperplate' font is displayed, showing the alphabet in various sizes. The right panel contains settings for printing or saving the report. The 'Printer' is set to 'Brother HL-L2360D series'. 'Presets' are set to 'Default Settings'. 'Copies' is 1, and 'Two-Sided' is unchecked. 'Pages' is set to 'All'. 'Paper Size' is 'US Letter' (8.5 by 11.0 inches). 'Orientation' is set to 'Portrait'. The 'Report Type' is 'Waterfall'. The 'Show Font Details' checkbox is checked, displaying font information like Family, Style, Kind, PostScript Name, Full Name, Unique Name, Manufacturer, Version, and Designer. A 'Sample Sizes' list shows 8, 10, 12, 16, 24, 36, 48, 60, and a '+' button. At the bottom, there are buttons for '?', 'PDF', 'Hide Details', 'Cancel', and 'Print'. Two green arrows point to the 'PDF' and 'Print' buttons.

Click the Print button to send the report to your printer or click PDF to Save as PDF.

